



# INDUSTRIAL COMMERCIAL SHUTTERS

## Roll-A-Shutter®

6/100



8/100



10/100



12/100



Series 40



Series 65



Series 90



Clear-A-View



## Roll-A-Grille®

12mm



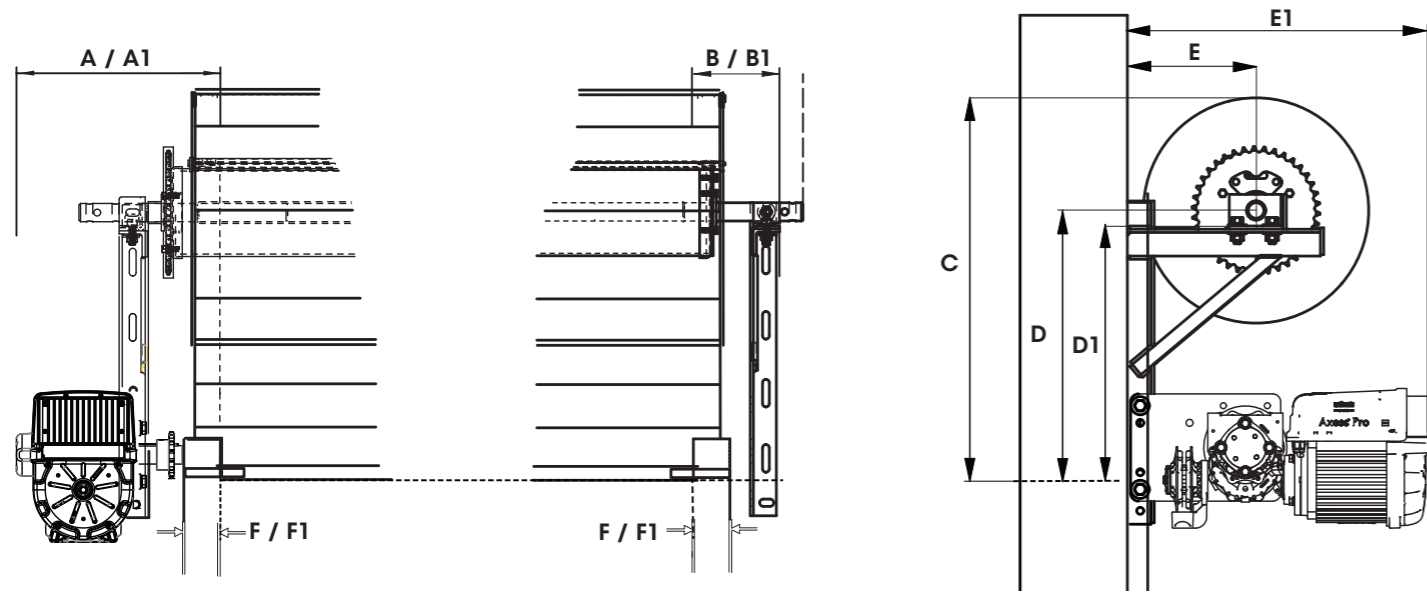
19mm





installation requirements Steel Sprung Shutter

4

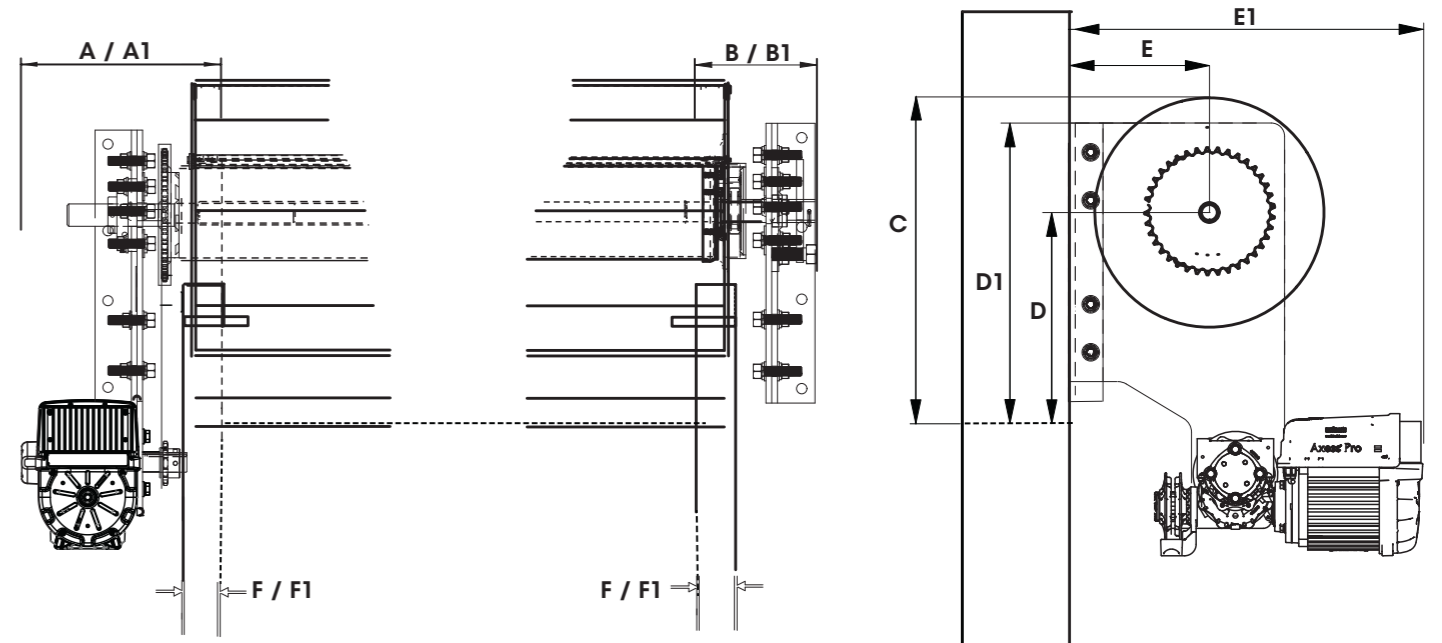


dimension table

Door Model Code	Door height (mm)	Door width (mm)	Drum Size	Minimum Sideroom Opener Side		Minimum Sideroom Plain Side		Recommended Headroom	Axle to Lintel	Lintel to Bracket	Recommended Backroom		Width of Guide		
				W/L	Non W/L	W/L	Non W/L				Bundle to lintel	Opener	W/L	Non W/L	
				A	A1	B	B1	C	D	D1	E	E1	F	F1	
RAS 6/100	up to 3000	4301 - 6000	6"					590	395	370	225	700	90	77	
	3001 - 3900							630	415	390	245				
	3901 - 5100							650	425	400	255				
	5101 - 6000							692	446	421	276				
RAS 8/100	up to 3000	up to 6000	6"	400	380	260	240	590	395	370	225	700	90	77	
	3001 - 3900							630	415	390	245				
	3901 - 5100							650	425	400	255				
	5101 - 6000							692	446	421	276				
RAS 10/100	up to 2400			6"					580	390	365	220	700	90	77
	2401 - 4200								640	420	395	250			
	4201 - 5400			660					430	405	260				
	5401 - 6000			692					446	421	276				

installation requirements Steel Sprung Shutter with heavy plate brackets

5



dimension table

Door Model Code	Door height (mm)	Door width (mm)	Drum Size	Minimum Sideroom Opener Side		Minimum Sideroom Plain Side		Recommended Headroom	Axle to Lintel	Lintel to Bracket	Recommended Backroom		Width of Guide	
				W/L	Non W/L	W/L	Non W/L				Bundle to lintel	Opener	W/L	Non W/L
				A	A1	B	B1	C	D	D1	E	E1	F	F1
RAS 6/100	up to 3000	4301 - 9000	6"					590	395	547	225	700	90	77
	3001 - 3900	4301 - 8500						630	415	567	245			
	3901 - 5100	4301 - 8000						650	425	577	255			
	5101 - 6500	4301 - 7500						692	446	598	276			
	6501 - 6800	5405 - 7000						706	453	605	283			
RAS 8/100	up to 3000	up to 9000	6"	381	361	245	225	590	395	547	225	700	90	77
	3001 - 3900	up to 8500						630	415	567	245			
	3901 - 5100	up to 8000						650	425	577	255			
	5101 - 6500	up to 7500						692	446	598	276			
	6501 - 6800	5405 - 7000						706	453	605	283			
RAS 10/100	up to 3000	up to 10000	6"					580	390	542	220	700	90	77
	3001 - 3900	up to 9000						640	420	572	250			
	3901 - 5100	up to 8500						660	430	582	260			
	5101 - 6500	up to 8000						692	446	598	276			
	6501 - 6800	5405 - 7500						706	453	605	283			

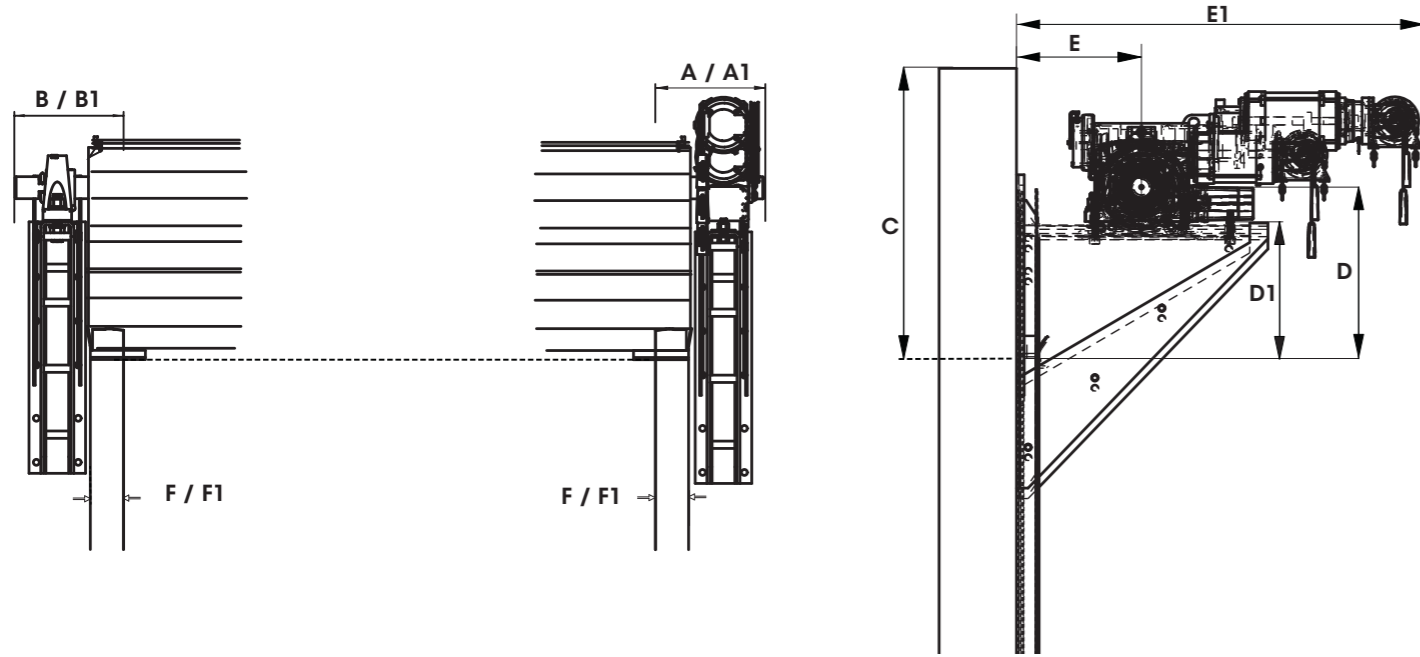


March 2023  
165111\_00



March 2023  
165111\_00

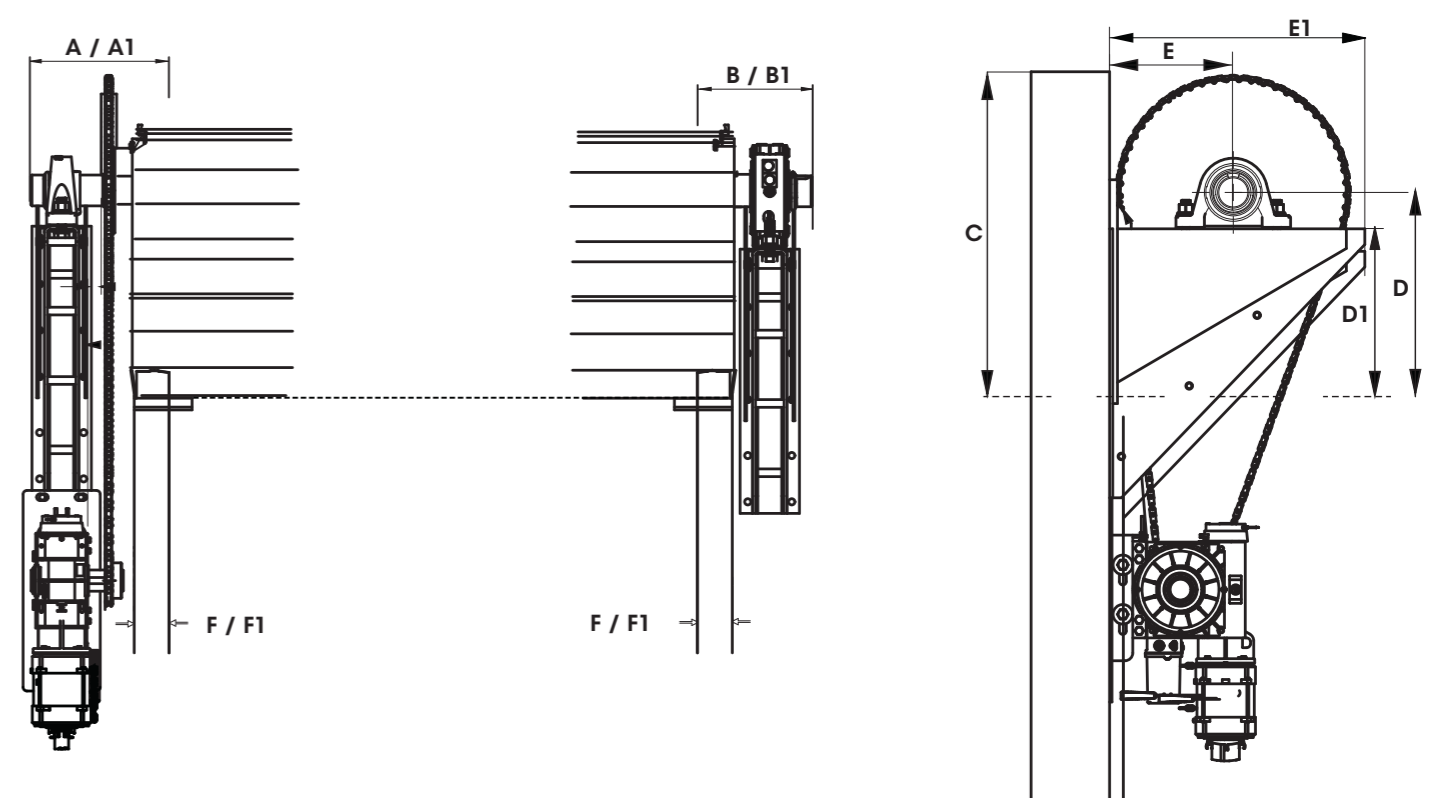
installation requirements Steel Direct Lift / Direct Drive



dimension table

Door Model Code	Door height (mm)	Door width (mm)	Drum Size	Minimum Sideroom Opener End		Minimum Sideroom Plain End		Recommended Headroom	Axle to Lintel	Lintel to Bracket	Recommended Backroom		Width of Guide																									
				W/L	Non W/L	W/L	Non W/L				Axle to Wall	Opener	W/L	Non W/L																								
				A	A1	B	B1				C	D	D1	E	E1	F	F1																					
RAS 6/100	up to 3000	up to 4200	8"	295	295	295	295	636	418	Measurement determined by size of spindle. Refer to installing first bracket in installation manual.	248	1040	90	77																								
	3001 - 3900	up to 6000						650	425		255																											
	3901 - 5100	up to 5700						694	447		277																											
	5101 - 6000	up to 6000						730	465		295																											
RAS 8/100	up to 3000	up to 4200	8"					295	295		295				295	636	418	Measurement determined by size of spindle. Refer to installing first bracket in installation manual.	248	1040	90	77																
	3001 - 3900	up to 6000														650	425		255																			
	3901 - 5100	up to 5700														694	447		277																			
	5101 - 6000	up to 6000														730	465		295																			
RAS 10/100	up to 3000	up to 4200	8"													295	295		295				295	600	400	Measurement determined by size of spindle. Refer to installing first bracket in installation manual.	230	1040	90	77								
	3001 - 3900	up to 6000																						650	425		255											
	3901 - 5100	up to 5700																						700	450		280											
RAS 12/100	up to 3000	up to 4200	10"																					295	295		295				295	610	405	Measurement determined by size of spindle. Refer to installing first bracket in installation manual.	235	1040	90	77
	3001 - 3900	up to 6000		708	454	284																																
	3901 - 5100	up to 5700		760	480	310																																
	5101 - 6000	up to 6000	12"	295	295	295	295			790		495	Measurement determined by size of spindle. Refer to installing first bracket in installation manual.	325																		1040	90		77			

installation requirements Steel Direct Lift / Chain Drive

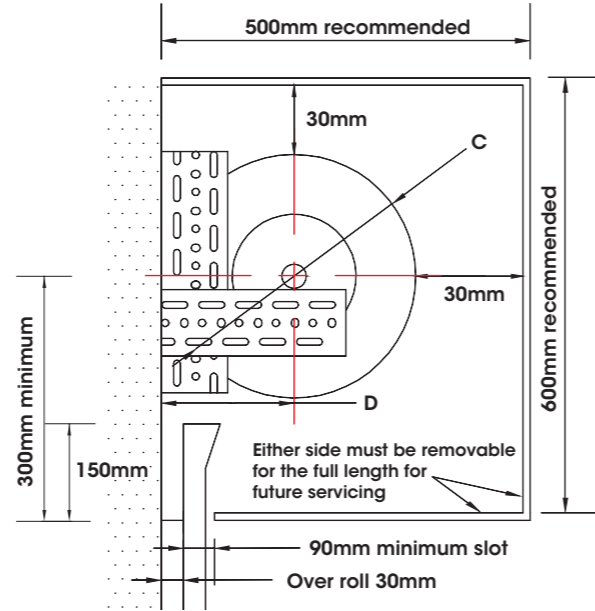
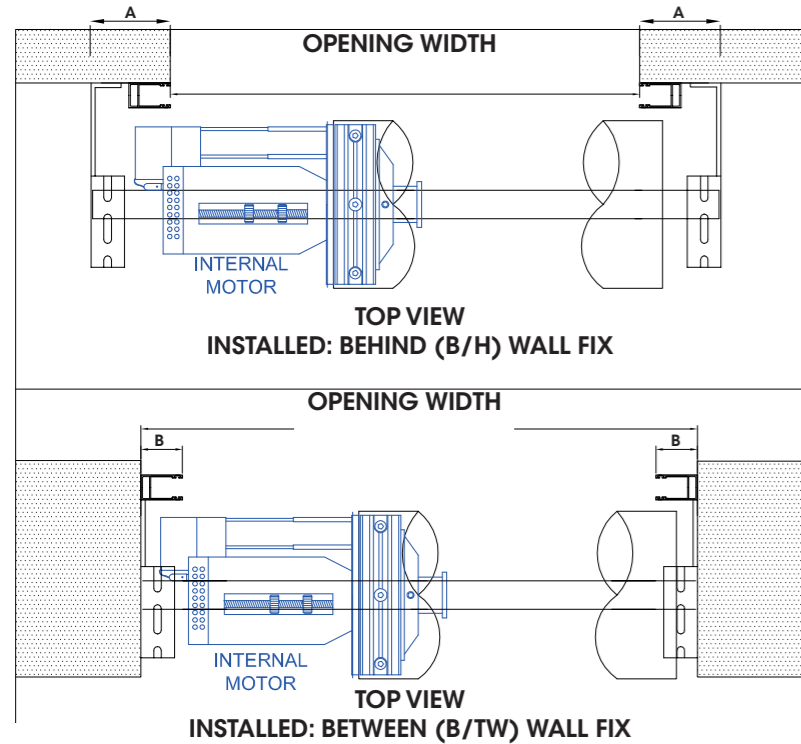


dimension table

Door Model Code	Door height (mm)	Door width (mm)	Drum Size	Minimum Sideroom Opener End		Minimum Sideroom Plain End		Recommended Headroom	Axle to Lintel	Lintel to Bracket	Recommended Backroom		Width of Guide															
				W/L	Non W/L	W/L	Non W/L				Bundle to lintel		Axle to Wall	Bundle	W/L	Non W/L												
				A	A1	B	B1				C	D	D1	E	E1	F	F1											
RAS 6/100	up to 3000	up to 9000	8"	353	337	331	305	636	418	Measurement determined by size of bearing and safety break. Refer to installing first bracket in installation manual.	248	436	90	77														
	3001 - 3900	up to 8500						650	425		255	450																
	3901 - 5100	up to 8000						694	447		277	494																
	5101 - 6500	up to 7500						730	465		295	530																
RAS 8/100	up to 3000	up to 9000	8"					353	337		331	305			636	418	Measurement determined by size of bearing and safety break. Refer to installing first bracket in installation manual.	248	436	90	77							
	3001 - 3900	up to 8500													650	425		255	450									
	3901 - 5100	up to 8000													694	447		277	494									
	5101 - 6500	up to 7500													730	465		295	530									
RAS 10/100	up to 3000	up to 12000	8"												353	337		331	305			660	430	Measurement determined by size of bearing and safety break. Refer to installing first bracket in installation manual.	260	460	90	77
	3001 - 4200																					710	455		285	510		
	4201 - 5400																					760	480		310	560		
	5401 - 6500																					790	495		325	590		
	6501 - 9000			830	515	345	630																					
RAS 12/100	up to 3000	up to 12000	10"	353	337	331	305			670			435	Measurement determined by size of bearing and safety break. Refer to installing first bracket in installation manual.								265	470		90	77		
	3001 - 4200									768			484									314	568					
	4201 - 5400									820			510									340	620					
	5401 - 6500							850	525	355	650																	
	6501 - 7500							860	530	360	660																	
	7501 - 9000							900	550	380	700																	
9001 - 10000	910	555	385					710																				



## installation requirements Aluminum - Handlift & Central Open



\*For restricted side room installations measurements A & B can be reduced to guide depth

Door height (mm)	SERIES 40					
	Side Guide (min)		Roll Diameter		Axle from Wall	
	A*	B*	C		D	
	B/H	B/TW	DRUM 0165	DRUM 0229	DRUM 0165	DRUM 0229
600	100	50	190	270	105	145
900	100	50	200	270	110	145
1200	100	50	215	280	117	150
1500	100	50	230	290	125	155
1800	100	50	250	290	135	155
2100	100	50	260	310	140	165
2400	100	50	260	320	140	170
2700	100	50	275	340	147	180
3000	100	50	290	340	155	180
3300	100	50	315	355	167	187
3600	100	50	325	370	172	195

Door height (mm)	SERIES 65					
	Side Guide (min)		Roll Diameter		Axle from Wall	
	A*	B*	C		D	
	B/H	B/TW	DRUM 0165	DRUM 0229	DRUM 0165	DRUM 0229
900	100	50	260	305	140	162
1200	100	50	260	305	140	162
1500	100	50	260	320	140	170
1800	100	50	270	330	145	175
2100	100	50	270	350	145	185
2400	100	50	280	350	150	185
2700	100	50	300	360	160	190
3000	100	50	300	370	160	195
3300	100	50	340	380	180	200
3600	100	50	360	395	190	207

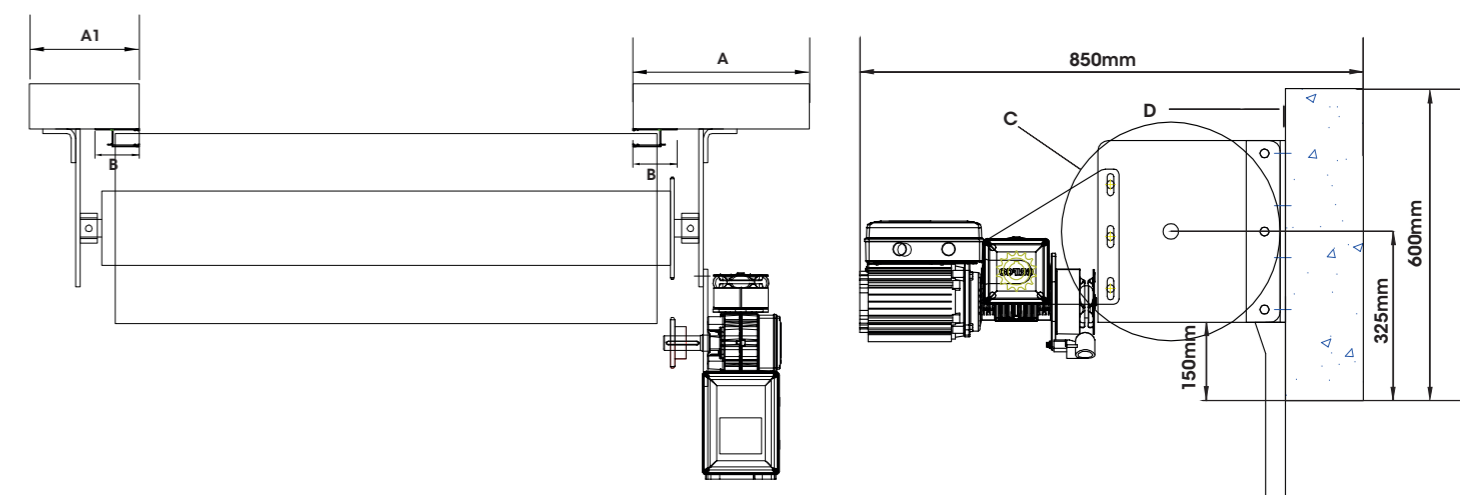
Door height (mm)	SERIES 90					
	Side Guide (min)		Roll Diameter		Axle from Wall	
	A*	B*	C		D	
	B/H	B/TW	DRUM 0165	DRUM 0229	DRUM 0165	DRUM 0229
1000	100	73	260	325	140	173
1500	100	73	275	346	148	183
2000	100	73	325	356	173	188
2500	100	73	360	380	190	200
3000	100	73	360	392	190	206
3500	100	73	390	400	205	210
4000	100	73	410	420	215	220
4500	100	73	420	430	220	225

Door height (mm)	CLEAR-A-VIEW			
	Side Guide (min)		Roll Diameter	Axle from Wall
	A*	B*	C	D
	B/H	B/TW	DRUM 0229	DRUM 0229
900	100	50	290	155
1200	100	50	290	155
1500	100	50	290	155
1800	100	50	360	160
2100	100	50	300	160
2400	100	50	310	165
2700	100	50	310	165
3000	100	50	320	170
3300	100	50	320	170
3600	100	50	340	180
4000	100	50	340	180

Door height (mm)	12MM GRILLE			
	Side Guide (min)		Roll Diameter	Axle from Wall
	A*	B*	C	D
	B/H	B/TW	DRUM 0229	DRUM 0229
900	100	50	310	165
1200	100	50	315	167
1500	100	50	325	172
1800	100	50	330	175
2100	100	50	350	185
2400	100	50	365	192
2700	100	50	375	197
3000	100	50	380	200
3300	100	50	390	205
3600	100	50	420	220
4000	100	50	440	230

Door height (mm)	19MM GRILLE					
	Side Guide (min)		Roll Diameter		Axle from Wall	
	A*	B*	C		D	
	B/H	B/TW	DRUM 0165	DRUM 0229	DRUM 0165	DRUM 0229
600	100	73	270	145	145	
900	100	73	270	145	145	
1000	100	73	326	173	173	
1200	100	73	280	150	150	
1500	100	73	326	290	173	155
1800	100	73	290	155	155	155
2000	100	73	330	175	175	175
2100	100	73	310	165	165	165
2400	100	73	320	170	170	170
2500	100	73	364	192	192	192
2700	100	73	340	180	180	180
3000	100	73	378	340	200	180
3300	100	73	355	187	187	187
3500	100	73	415	218	218	218
3600	100	73	370	195	195	195
4000	100	73	435	228	228	228
4500	100	73	460	240	240	240

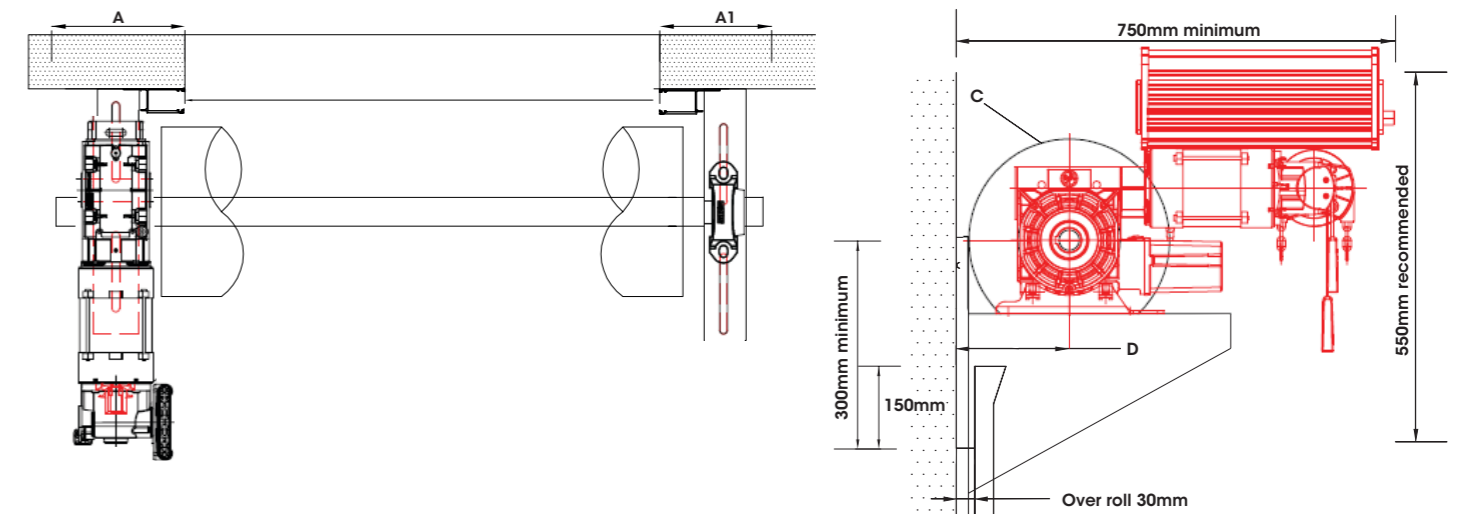
## installation requirements Aluminum Shutter ready for motor



Door height (mm)	SERIES 90				
	Side Room		Side Guide (min)	Roll Diameter	Axle from Wall
	A	A1	B	C	D
	Opener	Plain	B/H	DRUM 0165	DRUM 0165
1000	400	250	100	260	140
1500	400	250	100	275	148
2000	400	250	100	325	173
2500	400	250	100	360	190
3000	400	250	100	360	190
3500	400	250	100	390	205
4000	400	250	100	410	215
4500	400	250	100	420	220

Door height (mm)	19MM GRILLE				
	Side Room		Side Guide (min)	Roll Diameter	Axle from Wall
	A	A1	B	C	D
	Opener	Plain	B/H	DRUM 0165	DRUM 0165
1000	400	250	100	326	173
1500	400	250	100	326	173
2000	400	250	100	330	175
2500	400	250	100	364	192
3000	400	250	100	378	200
3500	400	250	100	415	218
4000	400	250	100	435	225
4500	400	250	100	460	240

## installation requirements Aluminum Direct Drive



Door height (mm)	SERIES 90				
	Side Room		Side Guide (min)	Roll Diameter	Axle from Wall
	A	A1	B	C	D
	Opener	Plain	B/H	DRUM 0165	DRUM 0165
1000	320	250	100	260	140
1500	320	250	100	275	148
2000	320	250	100	325	173
2500	320	250	100	360	190
3000	320	250	100	360	190
3500	320	250	100	390	205
4000	320	250	100	410	215
4500	320	250	100	420	220

Door height (mm)	19MM GRILLE				
	Side Room		Side Guide (min)	Roll Diameter	Axle from Wall
	A	A1	B	C	D
	Opener	Plain	B/H	DRUM 0165	DRUM 0165
1000	320	250	100	326	173
1500	320	250	100	326	173
2000	320	250	100	330	175
2500	320	250	100	364	192
3000	320	250	100	378	200
3500	320	250	100	415	218
4000	320	250	100	435	225
4500	320	250	100	460	240

## shipping weights

Due to the considerable variation in door weights, weights shown are intended to be used for guidance only and not taken as exact figures. Intermediate sizes can be approximated from the sizes listed. The weights include all fittings normally supplied with the particular size door.

**WARNING!** Below weight information supplied for installer to utilize correct lifting equipment. Failure to used correct equipment may result in death or damage to property.

### Roll-A-Shutter® 6/100 steel gs

all weight shown in kilograms

height	width									
	4800		5400		6000		6600		7000#	
	UN*	C*	UN*	C*	UN*	C*	UN*	C*	UN*	C*
2700	325	405	340	430	360	460	395	505	420	540
3000	345	425	360	450	380	480	420	530	445	565
3300	360	440	380	470	400	500	440	550	465	585
3600	380	460	400	490	440	540	485	595	515	635
3900	400	480	420	510	470	570	515	625	550	670
4200	420	500	450	540	510	610	560	670	595	715
4500	435	515	480	570	560	660	615	725	655	775
4800	453	533	520	610	600	700	660	770	700	820
5100	550	630	630	720	690	790	760	870	805	825
5400	570	650	660	750	710	810	780	890	830	855
5700	590	670	680	770	730	830	805	915	850	875
6000	620	700	700	790	780	880	860	975	910	1030

# Consult your B&D Representative for weights over 7000mm width.

### Roll-A-Shutter® 8/100 steel gs

all weight shown in kilograms

height	width																				
	1800		2400		3000		3600		4200		4800		5400		6000		6600		7000#		
	UN*	C*	UN*	C*	UN*	C*	UN*	C*	UN*	C*	UN*	C*	UN*	C*	UN*	C*	UN*	C*	UN*	C*	
1800	140	172	180	220	220	270	260	320	300	370	340	420									
2100	150	182	190	230	230	280	270	330	310	380	350	430									
2400	160	192	200	240	240	290	280	340	320	390	360	440									
2700	170	202	210	250	250	300	290	350	330	400	370	450	420	510	500	600	550	660	585	705	
3000	180	212	230	270	270	320	320	380	360	430	410	490	450	540	530	630	585	685	620	740	
3300	190	222	240	280	290	340	340	400	380	450	430	510	470	560	560	660	615	725	655	765	
3600	210	242	260	300	310	360	360	420	410	480	450	530	510	600	580	680	640	750	675	795	
3900	220	252	270	310	320	370	370	430	420	490	480	560	540	630	610	710	670	780	710	830	
4200	230	262	280	320	330	380	390	450	450	520	500	580	570	660	640	740	705	815	745	865	
4500	250	282	310	350	350	400	410	470	460	530	520	600	600	690	660	760	725	835	770	890	
4800	260	292	320	360	360	410	420	480	490	560	540	620	630	720	690	790	760	870	805	925	
5100					380	430	430	490	500	570	570	650	660	750	720	820	790	900	840	960	
5400					410	460	450	510	510	580	590	670	680	770	740	840	815	925	865	985	
5700					430	480	480	540	540	610	620	700	710	800	770	870	845	955	900	1020	
6000					460	510	510	570	570	640	650	730	730	820	850	950	935	1045	990	1110	

# Consult your B&D Representative for weights over 7000mm.

UN\* = uncrated weight  
C\* = crated weight

### Roll-A-Shutter® 10/100 steel gs

all weight shown in kilograms

UN\* = uncrated weight  
C\* = crated weight

height	width																	
	2400		3000		3600		4200		4800		5400		6000		6600		7000#	
	UN*	C*	UN*	C*	UN*	C*	UN*	C*	UN*	C*	UN*	C*	UN*	C*	UN*	C*	UN*	C*
2400	240	280	290	340	340	400	380	450	430	510	480	570	530	630	580	690	615	750
2700	250	290	300	350	360	420	410	480	460	540	510	600	560	660	620	730	655	790
3000	260	300	320	370	370	430	430	500	480	560	540	630	600	700	650	760	690	830
3300	280	320	340	390	390	450	450	520	500	580	570	660	630	730	680	790	720	860
3600	290	330	350	400	410	470	470	540	530	610	590	680	660	760	720	830	800	960
3900	300	340	370	420	430	490	490	560	560	640	620	710	680	780	810	920	850	990
4200	320	360	380	430	450	510	520	590	580	660	650	740	710	810	840	950	1075	1310
4500	330	370	400	450	470	530	540	610	600	680	670	760	810	910	880	990	1120	1360
4800	340	380	420	470	490	550	560	630	630	710	700	790	840	940	1240	1350	1265	1400
5100	360	400	430	480	510	570	580	650	650	730	720	810	870	970	1290	1400	1315	1450
5400	370	410	450	500	520	580	600	670	680	760	750	840	900	1000	1330	1440	1355	1490
5700	390	430	470	520	540	600	620	690	700	780	770	860	930	1030	1350	1460	1395	1540
6000	400	440	480	530	550	610	630	700	710	810	800	915	950	1075	1410	1520	1450	1620

# Consult your B&D Representative for weights over 7000mm.

### Roll-A-Shutter® 12/100 steel gs

all weight shown in kilograms

UN\* = uncrated weight  
C\* = crated weight

height	width																	
	2400		3000		3600		4200		4800		5400		6000		6600		7000#	
	UN*	C*	UN*	C*	UN*	C*	UN*	C*	UN*	C*	UN*	C*	UN*	C*	UN*	C*	UN*	C*
2400	269	314	325	381	381	448	426	504	482	571	538	638	594	706	650	773	689	840
2700	280	325	336	392	403	470	459	538	515	605	571	672	627	739	694	818	734	885
3000	291	336	358	414	414	482	482	560	538	627	605	706	672	784	728	851	773	930
3300	314	358	381	437	437	504	504	582	560	650	638	739	706	818	762	885	806	963
3600	325	370	392	448	459	526	526	605	594	683	661	762	739	851	806	930	896	1075
3900	336	381	414	470	482	549	549	627	627	717	694	795	762	874	907	1030	952	1109
4200	358	403	426	482	504	571	582	661	650	739	728	829	795	907	941	1064	1204	1467
4500	370	414	448	504	526	594	605	683	672	762	750	851	907	1019	986	1109	1254	1523
4800	381	426	470	526	549	616	627	706	706	795	784	885	941	1053	1389	1512	1417	1568
5100	403	448	482	538	571	638	650	728	728	818	806	907	974	1086	1445	1568	1473	1624
5400	414	459	504	560	582	650	672	750	762	851	840	941	1008	1120	1490	1613	1518	1689
5700	437	482	526	582	605	672	694	773	784	874	862	963	1042	1154	1512	1635	1562	1725
6000	448	493	538	594	616	683	706	784	795	907	896	1025	1064	1204	1579	1702	1624	1814

# Consult your B&D Representative for weights over 7000mm.



## Roll-A-Shutter® Series 40

all weight shown in kilograms

UN\* = uncrated weight

height	width											
	1000	1500	2000	2500	3000	3500	4000	4500	5000	5500	6000	6500
	UN*	UN*	UN*	UN*	UN*	UN*	UN*	UN*	UN*	UN*	UN*	UN*
1000	7.8	11.7	15.6	19.5	23.4	27.3	31.2	35.1	39.0	42.9	46.8	50.7
1250	9.8	14.6	19.5	24.4	29.3	34.1	39.0	43.9	48.8	53.6	58.5	63.4
1500	11.7	17.6	23.4	29.3	35.1	41.0	46.8	52.7	58.5	64.4	70.2	76.1
1750	13.7	20.5	27.3	34.1	41.0	47.8	54.6	61.4	68.3	75.1	81.9	88.7
2000	15.6	23.4	31.2	39.0	46.8	54.6	62.4	70.2	78.0	85.8	93.6	101.4
2250	17.6	26.3	35.1	43.9	52.7	61.4	70.2	79.0	87.8	96.5	105.3	114.1
2500	19.5	29.3	39.0	48.8	58.5	68.3	78.0	87.8	97.5	107.3		
2750	21.5	32.2	42.9	53.6	64.4	75.1	85.8	96.5	107.3			
3000	23.4	35.1	46.8	58.5	70.2	81.9	93.6	105.3				
3250	25.4	38.0	50.7	63.4	76.1	88.7	101.4	114.1				
3500	27.3	41.0	54.6	68.3	81.9	95.6	109.2	122.9				
3750	29.3	43.9	58.5	73.1	87.8	102.4	117.0					
4000	31.2	46.8	62.4	78.0	93.6	109.2	124.8					

## Roll-A-Shutter® Series 65

all weight shown in kilograms

UN\* = uncrated weight

height	width											
	1000	1500	2000	2500	3000	3500	4000	4500	5000	5500	6000	6500
	UN*	UN*	UN*	UN*	UN*	UN*	UN*	UN*	UN*	UN*	UN*	UN*
1000	7.8	11.7	15.6	19.5	23.4	27.3	31.2	35.1	39.0	42.9	46.8	50.7
1250	9.8	14.6	19.5	24.4	29.3	34.1	39.0	43.9	48.8	53.6	58.5	63.4
1500	11.7	17.6	23.4	29.3	35.1	41.0	46.8	52.7	58.5	64.4	70.2	76.1
1750	13.7	20.5	27.3	34.1	41.0	47.8	54.6	61.4	68.3	75.1	81.9	88.7
2000	15.6	23.4	31.2	39.0	46.8	54.6	62.4	70.2	78.0	85.8	93.6	101.4
2250	17.6	26.3	35.1	43.9	52.7	61.4	70.2	79.0	87.8	96.5	105.3	114.1
2500	19.5	29.3	39.0	48.8	58.5	68.3	78.0	87.8	97.5	107.3		
2750	21.5	32.2	42.9	53.6	64.4	75.1	85.8	96.5	107.3			
3000	23.4	35.1	46.8	58.5	70.2	81.9	93.6	105.3				
3250	25.4	38.0	50.7	63.4	76.1	88.7	101.4	114.1				
3500	27.3	41.0	54.6	68.3	81.9	95.6	109.2	122.9				
3750	29.3	43.9	58.5	73.1	87.8	102.4	117.0					
4000	31.2	46.8	62.4	78.0	93.6	109.2	124.8					

## Roll-A-Shutter® Series 90

all weight shown in kilograms

UN\* = uncrated weight

height	width											
	1000	1500	2000	2500	3000	3500	4000	4500	5000	5500	6000	6500
	UN*	UN*	UN*	UN*	UN*	UN*	UN*	UN*	UN*	UN*	UN*	UN*
1000	10.0	15.0	20.0	25.0	30.0	35.0	40.0	45.0	50.0	55.0	60.0	
1250	12.5	18.8	25.0	31.3	37.5	43.8	50.0	56.3	62.5	68.8	75.0	
1500	15.0	22.5	30.0	37.5	45.0	52.5	60.0	67.5	75.0	82.5	90.0	
1750	17.5	26.3	35.0	43.8	52.5	61.3	70.0	78.8	87.5	96.3	105.0	
2000	20.0	30.0	40.0	50.0	60.0	70.0	80.0	90.0	100.0			
2250	22.5	33.8	45.0	56.3	67.5	78.8	90.0	101.3	112.5			
2500	25.0	37.5	50.0	62.5	75.0	87.5	100.0	112.5	125.0			
2750	27.5	41.3	55.0	68.8	82.5	96.3	110.0	123.8				
3000	30.0	45.0	60.0	75.0	90.0	105.0	120.0					
3250	32.5	48.8	65.0	81.3	97.5	113.8						
3500	35.0	52.5	70.0	87.5	105.0	122.5						
3750	37.5	56.3	75.0	93.8	112.5							
4000	40.0	60.0	80.0	100.0	120.0							

## Clear-A-View®

all weight shown in kilograms

UN\* = uncrated weight

height	width											
	1000	1500	2000	2500	3000	3500	4000	4500	5000	5500	6000	6500
	UN*	UN*	UN*	UN*	UN*	UN*	UN*	UN*	UN*	UN*	UN*	UN*
1000	5.0	7.5	10.0	12.5	15.0	17.5	20.0	22.5	25.0	27.5	30.0	32.5
1250	6.3	9.4	12.5	15.6	18.8	21.9	25.0	28.1	31.3	34.4	37.5	40.6
1500	7.5	11.3	15.0	18.8	22.5	26.3	30.0	33.8	37.5	41.3	45.0	48.8
1750	8.8	13.1	17.5	21.9	26.3	30.6	35.0	39.4	43.8	48.1	52.5	56.9
2000	10.0	15.0	20.0	25.0	30.0	35.0	40.0	45.0	50.0	55.0	60.0	65.0
2250	11.3	16.9	22.5	28.1	33.8	39.4	45.0	50.6	56.3	61.9	67.5	73.1
2500	12.5	18.8	25.0	31.3	37.5	43.8	50.0	56.3	62.5	68.8	75.0	81.3
2750	13.8	20.6	27.5	34.4	41.3	48.1	55.0	61.9	68.8	75.6	82.5	89.4
3000	15.0	22.5	30.0	37.5	45.0	52.5	60.0	67.5	75.0	82.5	90.0	97.5
3250	16.3	24.4	32.5	40.6	48.8	56.9	65.0	73.1	81.3	89.4	97.5	105.6
3500	17.5	26.3	35.0	43.8	52.5	61.3	70.0	78.8	87.5	96.3	105.0	113.8
3750	18.8	28.1	37.5	46.9	56.3	65.6	75.0	84.4	93.8	103.1	112.5	121.9
4000	20.0	30.0	40.0	50.0	60.0	70.0	80.0	90.0	100.0	110.0	120.0	130.0

## Roll-A-Grille® 12mm

all weight shown in kilograms

UN\* = uncrated weight

height	width									
	1000	1500	2000	2500	3000	3500	4000	4500	5000	5500
	UN*	UN*	UN*	UN*	UN*	UN*	UN*	UN*	UN*	UN*
1000	3.0	4.5	6.0	7.5	9.0	10.5	12.0	13.5	15.0	16.5
1250	3.8	5.6	7.5	9.4	11.3	13.1	15.0	16.9	18.8	20.6
1500	4.5	6.8	9.0	11.3	13.5	15.8	18.0	20.3	22.5	24.8
1750	5.3	7.9	10.5	13.1	15.8	18.4	21.0	23.6	26.3	28.9
2000	6.0	9.0	12.0	15.0	18.0	21.0	24.0	27.0	30.0	33.0
2250	6.8	10.1	13.5	16.9	20.3	23.6	27.0	30.4	33.8	37.1
2500	7.5	11.3	15.0	18.8	22.5	26.3	30.0	33.8	37.5	41.3
2750	8.3	12.4	16.5	20.6	24.8	28.9	33.0	37.1	41.3	45.4
3000	9.0	13.5	18.0	22.5	27.0	31.5	36.0	40.5	45.0	49.5
3250	9.8	14.6	19.5	24.4	29.3	34.1	39.0	43.9	48.8	53.6
3500	10.5	15.8	21.0	26.3	31.5	36.8	42.0	47.3	52.5	57.8
3750	11.3	16.9	22.5	28.1	33.8	39.4	45.0	50.6	56.3	61.9
4000	12.0	18.0	24.0	30.0	36.0	42.0	48.0	54.0	60.0	66.0

## Roll-A-Grille® 19mm

all weight shown in kilograms

UN\* = uncrated weight

height	width											
	1000	1500	2000	2500	3000	3500	4000	4500	5000	5500	6000	6500
	UN*	UN*	UN*	UN*	UN*	UN*	UN*	UN*	UN*	UN*	UN*	UN*
1000	4.6	6.9	9.2	11.5	13.8	16.1	18.4	20.7	23.0	25.3	27.6	29.9
1250	5.8	8.6	11.5	14.4	17.3	20.1	23.0	25.9	28.8	31.6	34.5	37.4
1500	6.9	10.4	13.8	17.3	20.7	24.2	27.6	31.1	34.5	38.0	41.4	44.9
1750	8.1	12.1	16.1	20.1	24.2	28.2	32.2	36.2	40.3	44.3	48.3	52.3
2000	9.2	13.8	18.4	23.0	27.6	32.2	36.8	41.4	46.0	50.6	55.2	59.8
2250	10.4	15.5	20.7	25.9	31.1	36.2	41.4	46.6	51.8	56.9	62.1	67.3
2500	11.5	17.3	23.0	28.8	34.5	40.3	46.0	51.8	57.5	63.3	69.0	74.8
2750	12.7	19.0	25.3	31.6	38.0	44.3	50.6	56.9	63.3	69.6	75.9	82.2
3000	13.8	20.7	27.6	34.5	41.4	48.3	55.2	62.1	69.0	75.9	82.8	89.7
3250	15.0	22.4	29.9	37.4	44.9	52.3	59.8	67.3	74.8	82.2	89.7	97.2
3500	16.1	24.2	32.2	40.3	48.3	56.4	64.4	72.5	80.5	88.6	96.6	104.7
3750	17.3	25.9	34.5	43.1	51.8	60.4	69.0	77.6	86.3	94.9	103.5	112.1
4000	18.4	27.6	36.8	46.0	55.2	64.4	73.6	82.8	92.0	101.2	110.4	119.6

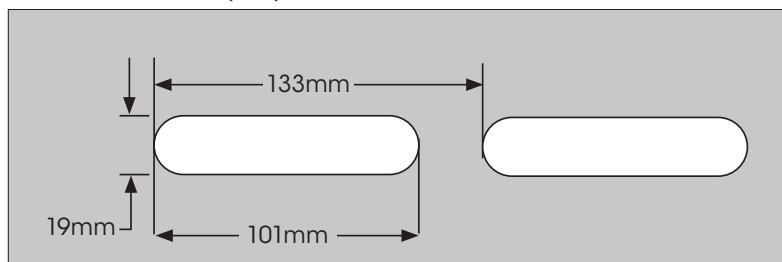


## slotting and perforation options

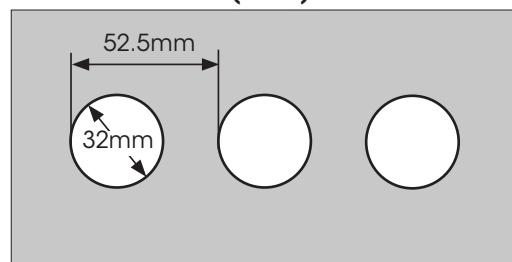
### Slotting

Slotting refers to the punching out of the required shape from the individual shutter slat, the slots being evenly punched along the slat. Customer requirements may request individual slats or the entire curtain to be slotted. If individual slats are to be slotted, the number and position of these slots in the curtain should be specified when ordered. The quantity of slats and the approximate height above floor level of the lowest slotted slat should be specified.

Slotted 19 x 101mm (13%)



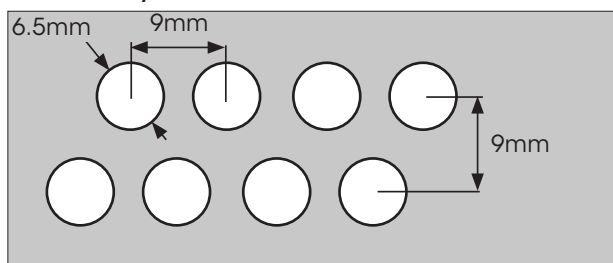
Slotted 32mm Round (14.5%)



### Perforations

In the Aluminum range a perforation solution is available only with the Series 90 product.

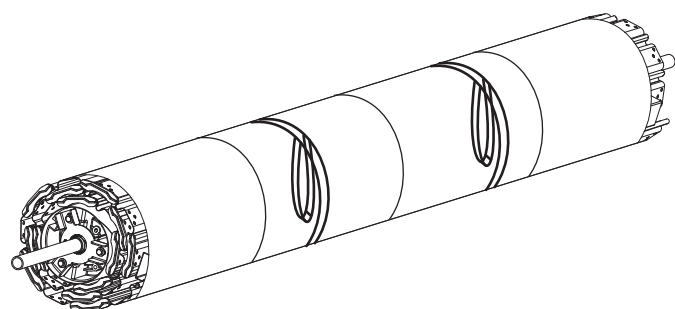
Series 90 Only



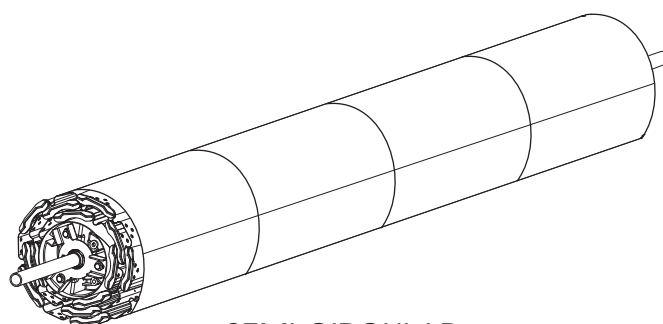
## crating options

all doors should be crated when delivered by rail. Similar packing is recommended when transporting by road for long distances, or at any time when there is any likelihood of damage during handling and transportation. An additional fee applies.

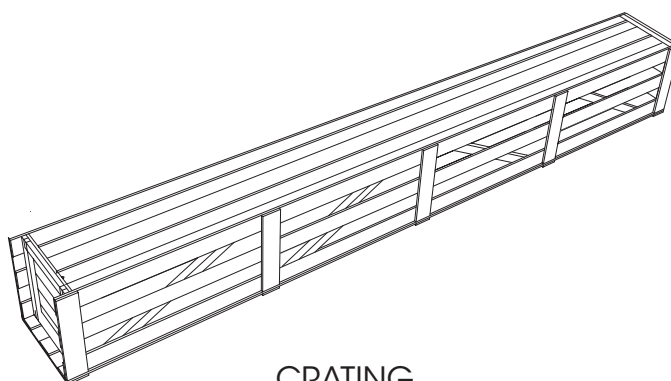
A variety of packaging options are available, such as: cardboard, semi-circular hardboard packaging and foam wrap. Additional fees apply (POA). Other types of crates have been used for special purposes, including timber export cases.



CARDBOARD PACKAGING WITH SLINGS



SEMI-CIRCULAR HARDBOARD PACKAGING



CRATING

